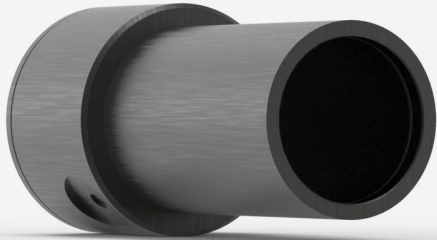


## UM9B-BL-D0

Pyroelectric detector for laser power measurement up to 25 mW.



### PRODUCT FAMILY KEY FEATURES

#### VERY LOW NOISE LEVEL

Noise levels of a photodetector, but with the large bandwidth of a pyroelectric

#### VERY LARGE BANDWIDTH

From DUV to FIR thanks to pyroelectric technology

#### SMART INTERFACE

Containing all the calibration data

#### COMPATIBLE STAND

[STAND-D-233](#)

## SPECIFICATIONS

### MEASUREMENT CAPABILITIES

Maximum average power (continuous) <sup>1</sup>	25 mW
Noise equivalent power	300 nW
Spectral range <sup>2</sup>	0.1 - 20 $\mu\text{m}$
Typical rise time	0.2 s
Power calibration uncertainty <sup>3</sup>	$\pm 4\%$
Chopper frequency <sup>4</sup>	10 $\pm$ 1 Hz

1. 20 mW with MAESTRO, 25 mW with M-LINK.
2. For the calibrated spectral range, see the user manual.
3. At 1064 nm.
4. SDC-500 digital optical chopper sold separately

### DAMAGE THRESHOLDS

Maximum average power density	50 mW/cm <sup>2</sup>
-------------------------------	-----------------------

### PHYSICAL CHARACTERISTICS

Aperture diameter	9 mm
Absorber	BL
Dimensions	38.1 $\varnothing$ X 79D mm
Weight	0.09 kg

### ORDERING INFORMATION

UM9B-BL-D0	202024
------------	--------

Specifications are subject to change without notice. Refer to the user manual for complete specifications.

## INTERESTED IN THIS PRODUCT?

GET A QUOTE

Find your local sales representative at [gentec-eo.com/contact-us](http://gentec-eo.com/contact-us)