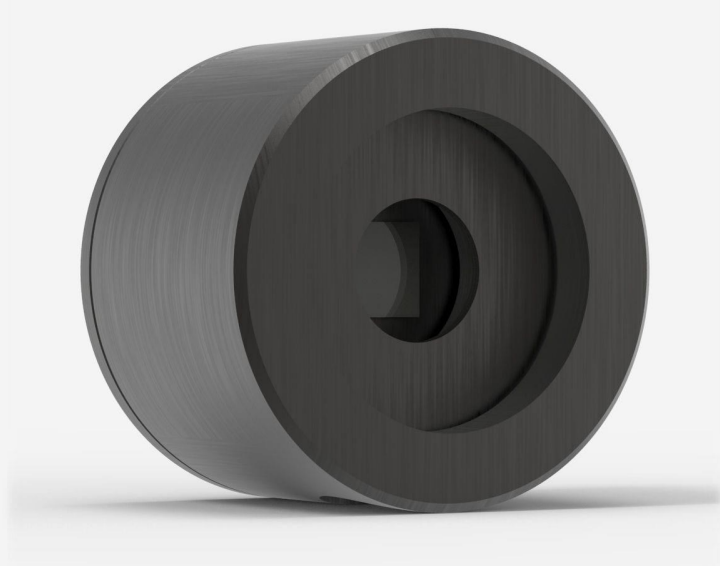


## QE8SP-B-MT-D0

Pyroelectric detector for laser energy measurement up to 0.93 mJ.



### PRODUCT FAMILY KEY FEATURES

#### VERY LOW NOISE LEVELS

Noise levels of a photo detector, but with the high energies of a pyroelectric:

- 50 nJ with the MT coating
- 100 nJ with the BL coating

#### 2 COATINGS AVAILABLE:

- BL: black coatings, sensitivity of 900 V/J, readings up to 400 Hz
- MT: metallic coating, sensitivity of 2400 V/J, readings up to 1000 Hz

#### SMART INTERFACE

Containing all the calibration data

#### COMPATIBLE STAND

[STAND-D-233](#)

## SPECIFICATIONS

### MEASUREMENT CAPABILITIES

Spectral range <sup>1</sup>	0.193 - 20 $\mu\text{m}$
Typical rise time	30 $\mu\text{s}$
Repeatability	<0.5%
Maximum repetition frequency	1000 Hz
Maximum measurable energy <sup>2</sup>	0.93 mJ
Noise equivalent energy <sup>3</sup>	80 nJ
Maximum pulse width	10 $\mu\text{s}$
Energy calibration uncertainty	$\pm 4.0\%$

1. For the calibrated spectral range, see the user manual.

2. With MAESTRO.

3. Without noise suppression algorithm. Order-of-magnitude improvement with U-LINK noise suppression algorithm. See user manual for details.

### DAMAGE THRESHOLDS

Maximum average power density <sup>1</sup>	1 W/cm <sup>2</sup>
Maximum energy density <sup>2</sup>	50 mJ/cm <sup>2</sup>
Maximum power	0.5 W

1. May vary with wavelength and average power.

2. At 1064 nm, 7 ns, 10 Hz. May vary with wavelength and pulse width.

### PHYSICAL CHARACTERISTICS

Cooling	Convection
Aperture width	7.8 mm
Aperture height	7.8 mm
Absorber	MT
Dimensions	38.1 $\varnothing$ X 27.4D mm
Weight	0.09 kg

### ORDERING INFORMATION

Specifications are subject to change without notice. Refer to the user manual for complete specifications.

## INTERESTED IN THIS PRODUCT?

GET A QUOTE

Find your local sales representative at [gentec-eo.com/contact-us](http://gentec-eo.com/contact-us)