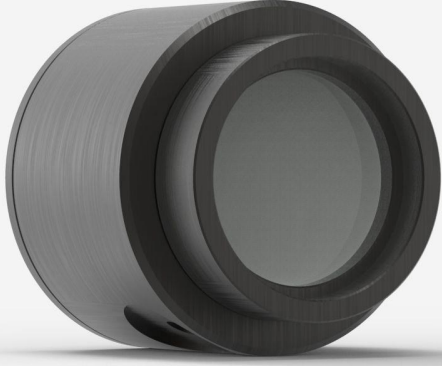


## PH100-SIUV-OD1-D0

Photodiode detector for laser power measurement up to 38 mW.



### PRODUCT FAMILY KEY FEATURES

#### LARGE APERTURES

10 mm Ø for the silicon sensors

#### 3 VERSIONS

- Silicon 350 - 1080 nm, up to 750 mW
- Silicon-UV 210 - 1080 nm, up to 38 mW
- Germanium 800 - 1650 nm, up to 500 mW

#### CHOICE OF ATTENUATORS

- OD0.3: 50% transmission (for PH100-SI<sup>UV</sup> only)
- OD1: 10% transmission
- OD2: 1% transmission

#### HIGH ACCURACY

The new PH100-SI-HA presents the lowest calibration uncertainty to date.

#### PRECISE CALIBRATION

Wavelength selection in 1 nm steps

#### SMART INTERFACE

Containing all the calibration data

#### COMPATIBLE STAND

[STAND-D-233](#)

## SPECIFICATIONS

### MEASUREMENT CAPABILITIES

|  |   |
|--|---|
| Maximum average power <sup>1</sup>         | 38 mW   |
| Noise equivalent power <sup>2</sup>        | 200 pW  |
| Spectral range                             | 400 - 1080 nm                                     |
| Typical rise time                          | 0.2 s   |
| Power calibration uncertainty <sup>3</sup> | ±5.0 % (400 - 1009 nm)<br>±7.5 % (1010 - 1080 nm) |
| Peak sensitivity                           | 850 nm  |
| Minimum repetition rate <sup>4</sup>       | 155 kHz   |

1. At 532 nm, with attenuator. See curves for maximum power at other wavelengths.
2. At 850 nm. Nominal value. Actual value depends on environmental electromagnetic interference and wavelength.
3. With attenuator. See user manual for calibration uncertainty without attenuator.
4. See user manual for details.

### DAMAGE THRESHOLDS

|                               |                       |
|-------------------------------|-----------------------|
| Maximum average power density | 100 W/cm <sup>2</sup> |
|-------------------------------|-----------------------|

### PHYSICAL CHARACTERISTICS

|                         |                |
|-------------------------|----------------|
| Aperture diameter       | 10 mm          |
| Absorber                | SiUV           |
| Dimensions              | 38.1Ø x 36D mm |
| Weight                  | 0.14 kg        |
| Distance to sensor face | 13.7 mm        |

### ORDERING INFORMATION

|                   |        |
|-------------------|--------|
| PH100-SIUV-OD1-D0 | 200881 |
|-------------------|--------|

Specifications are subject to change without notice. Refer to the user manual for complete specifications.

## INTERESTED IN THIS PRODUCT?

GET A QUOTE

Find your local sales representative at [gentec-eo.com/contact-us](https://gentec-eo.com/contact-us)